

ValveExpert Model X02

This test bench was developed to test servovalves for flight control and steering used on various **Airbus** aircrafts.

The fluid is **Skydrol**

The customer's specification required correlation precision **better than 0.5 %**. This was achieved.



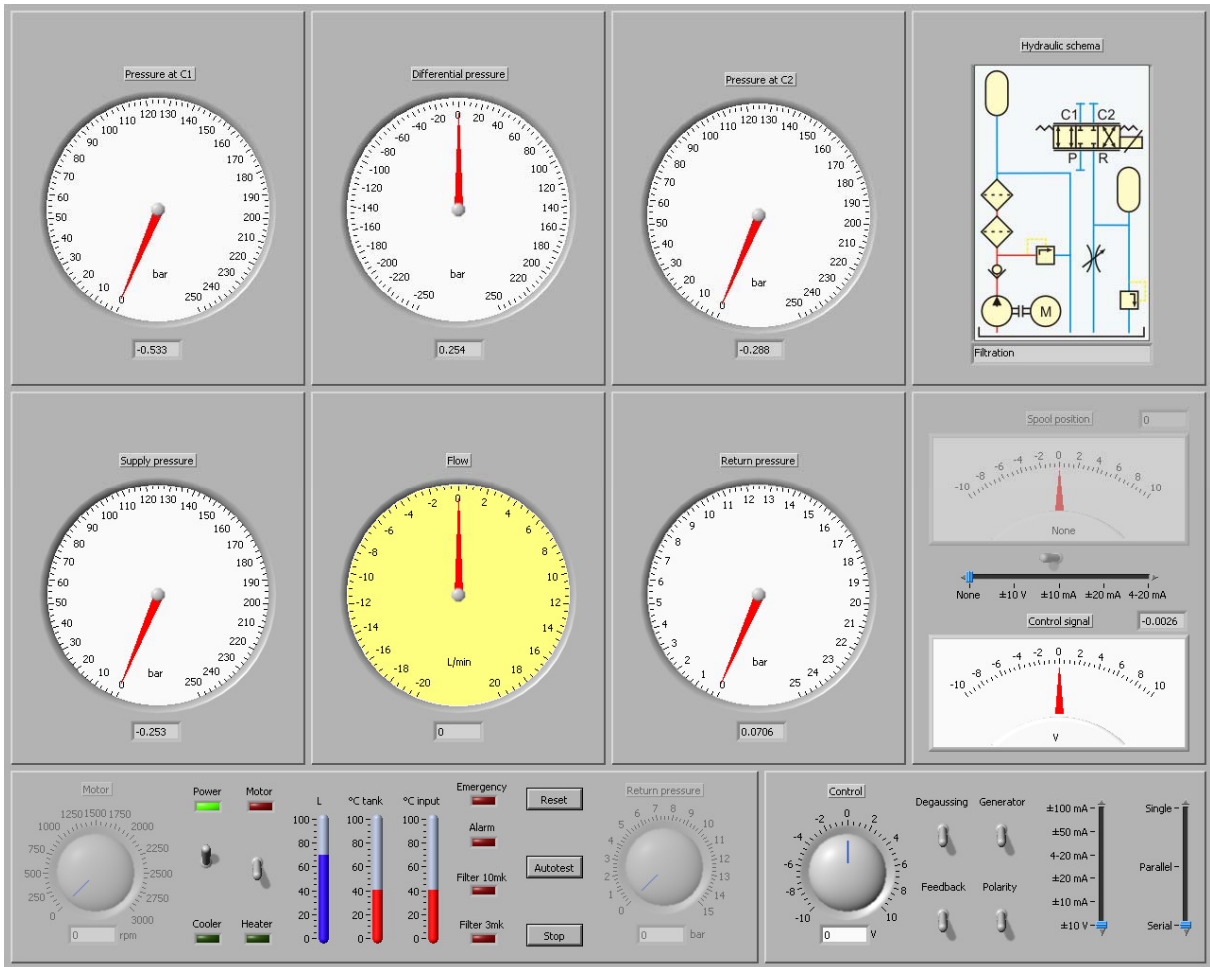
ValveExpert model X02



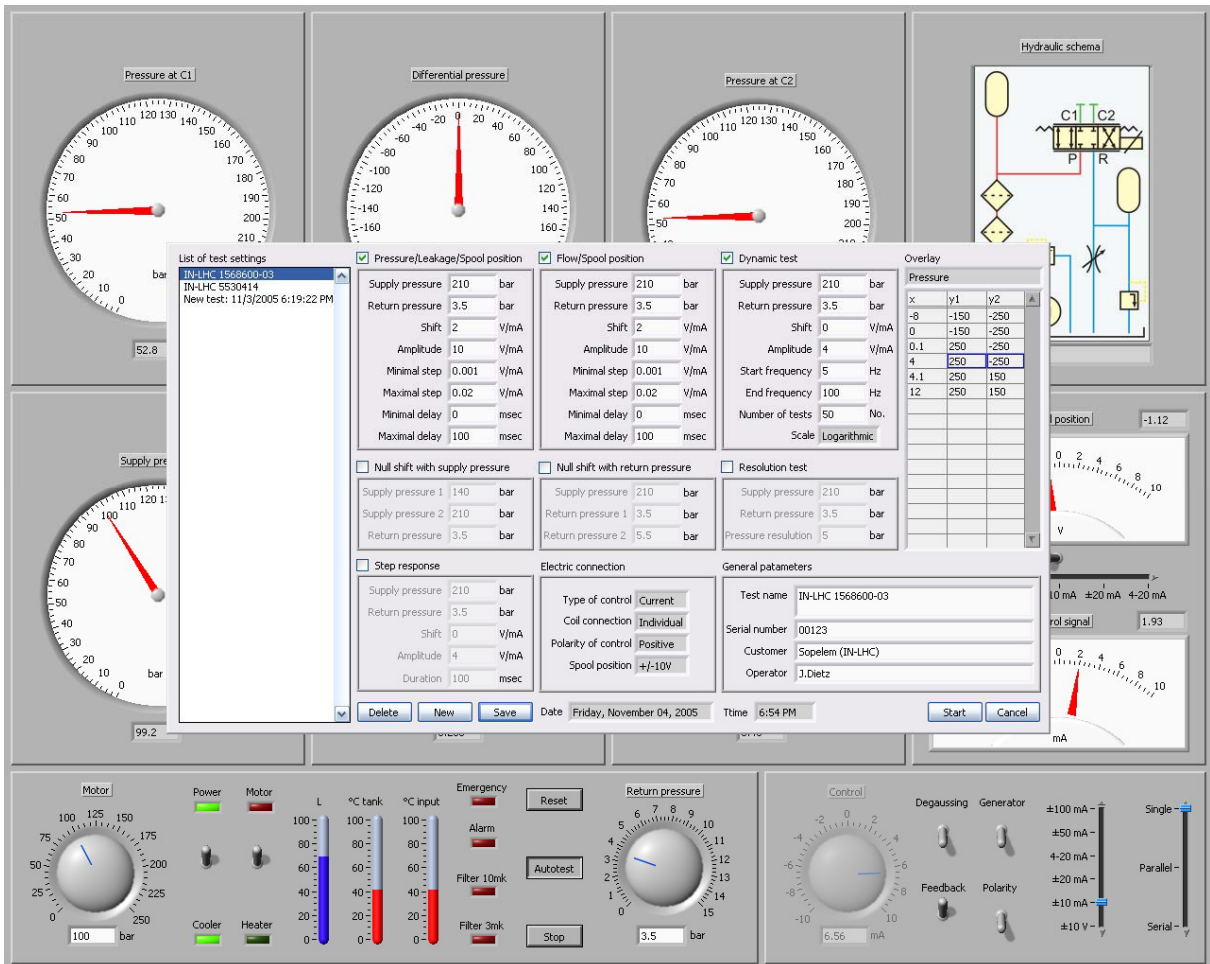
The back side of the test bench showing the case where the electronic devices are located.



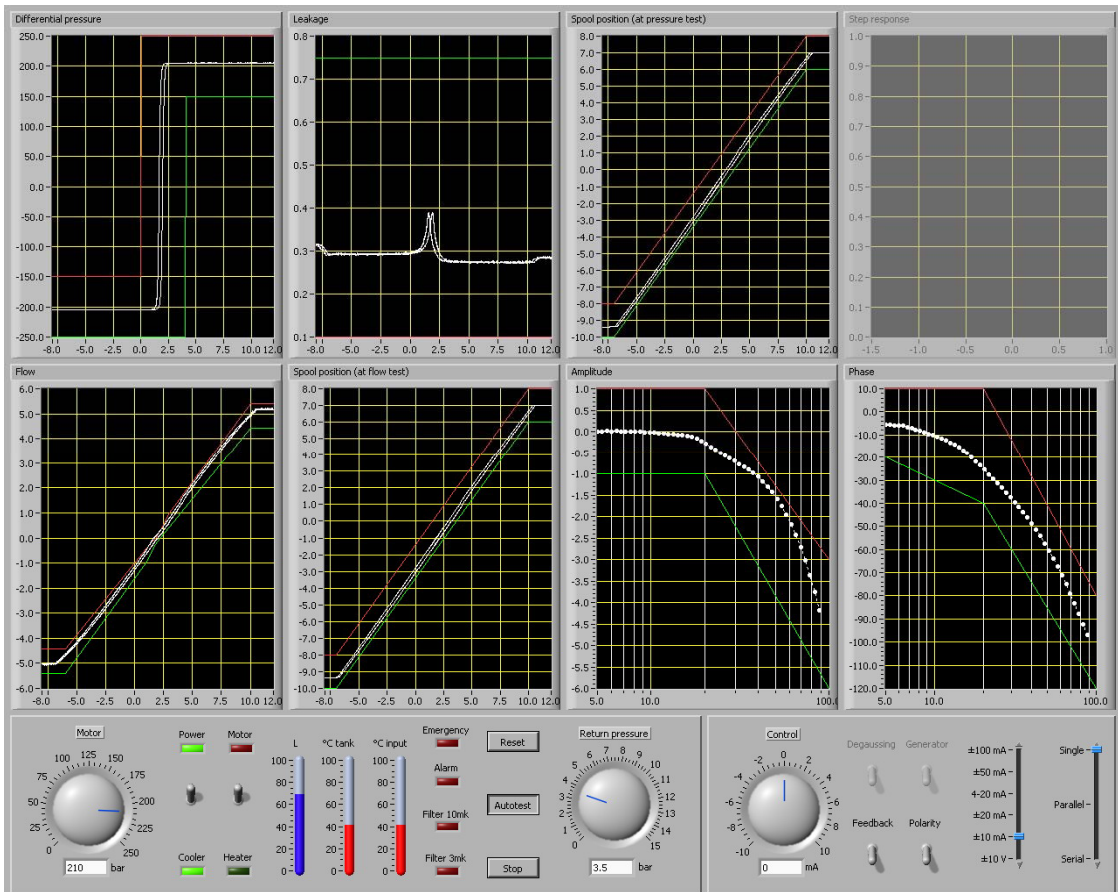
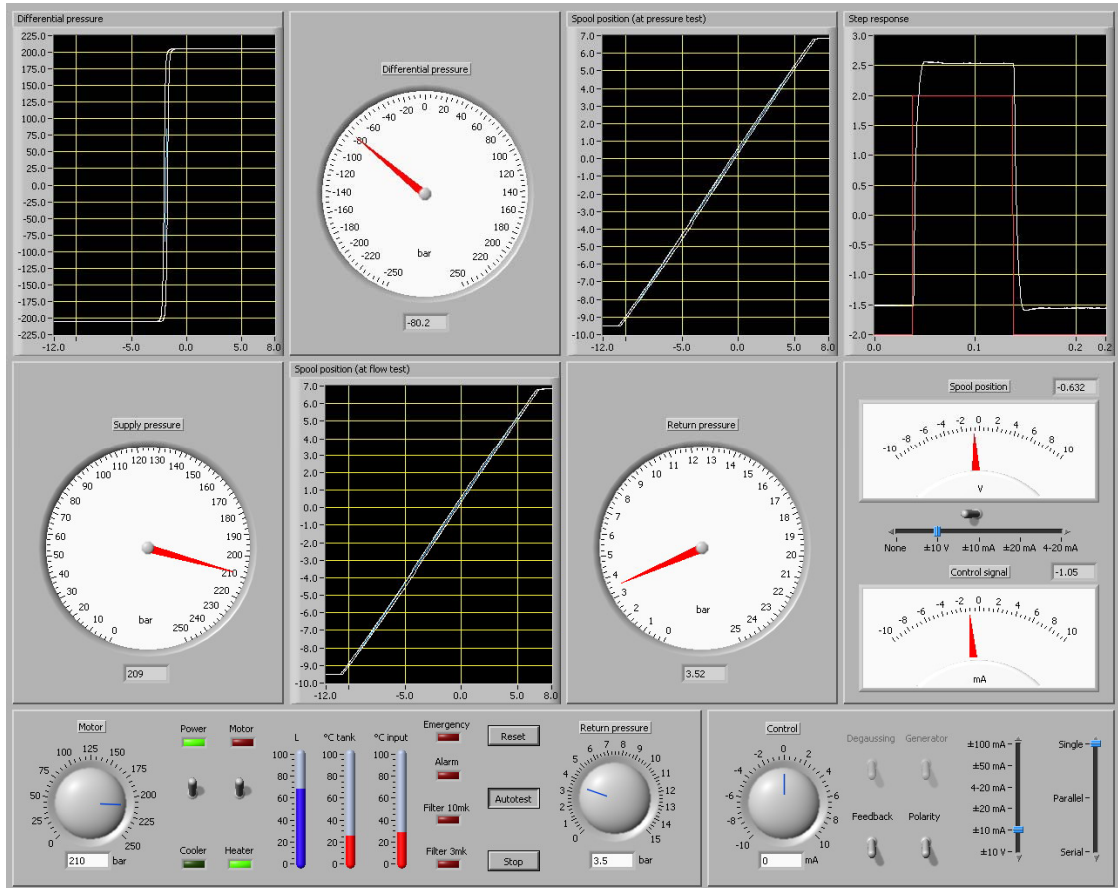
The hardware is a compact design, but all elements are still easily accessible.



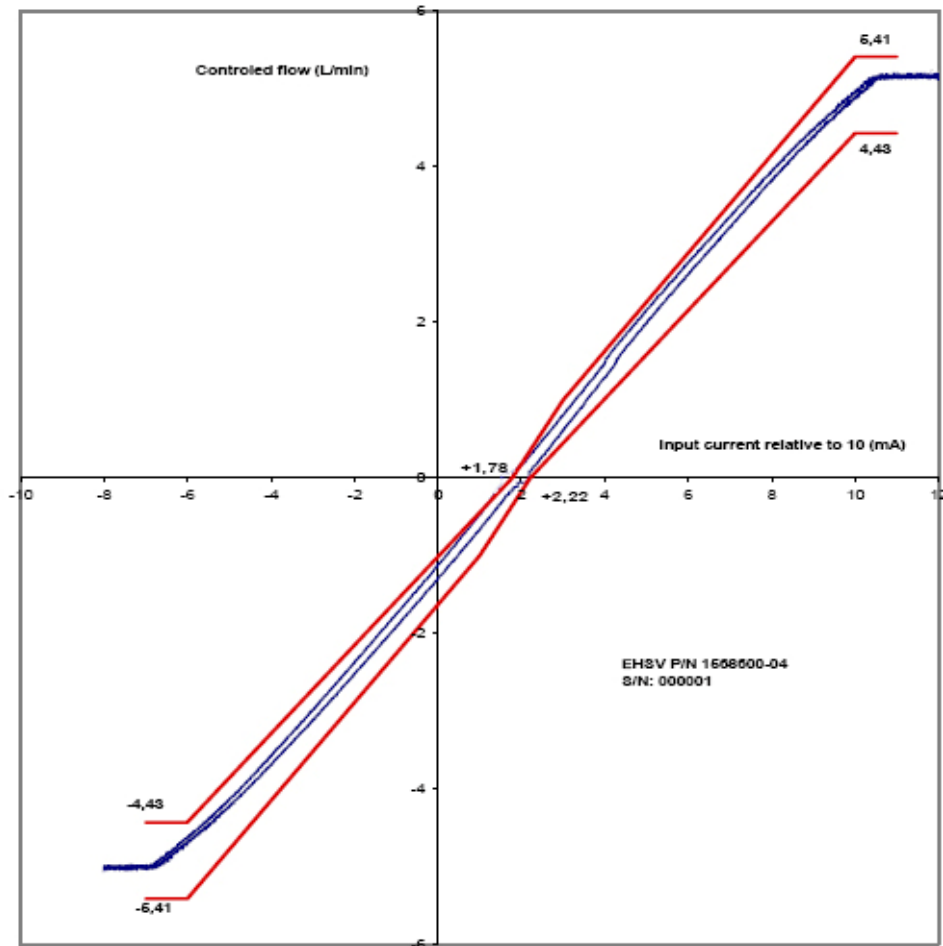
This screen is shown for the manual test.



The data base is shown prior to the automatic test. The test configuration is selectable.



During the test this screen is shown



ANNEXE 1 : GABARIT DE LA CARACTERISTIQUE $Q = f(I)$
 (APPENDIX 1 : FLOW VERSUS CURRENT ENVELOPE)

Essais réalisés	Direction Qualité Contrôle		Observations
Par :	Par :	Visa :	
Le :	Le :		

The print-out is in Excel format